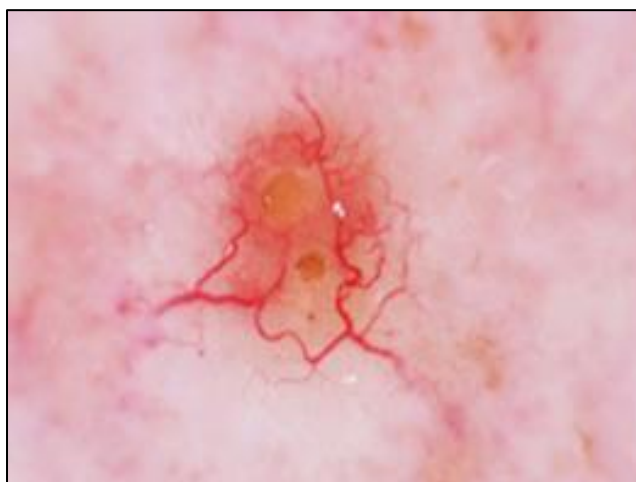


School of Postgraduate Medicine  
**Practical Dermoscopy**  
Code: 7LMS0220, Credits: 30, Level: 7

This module aims to enable practitioners to use dermoscopic skills to separate benign from malignant skin lesions, facilitating early detection and management of skin cancer. Dermoscopy is an essential tool in the diagnosis and management of skin lesions and specialists involved in assessing pigmented lesions must use dermoscopy as part of their clinical assessment. This module combines classroom teaching, work-based learning and competency-based assessment and has been developed to meet the needs of health care professionals involved regularly in the diagnosis and management of skin lesions.



**Dates:**

22<sup>nd</sup> & 23<sup>rd</sup> May 2025 Hybrid (09.00 – 16.00hrs)  
26<sup>th</sup> & 27<sup>th</sup> June 2025 Online (09.00 – 16.00hrs)  
15<sup>th</sup> August 2025 Online Test (am).

**Venue:** The 1<sup>st</sup> 2 days of teaching are offered face to face & online (hybrid) at the University of Hertfordshire, College Lane Campus, Hatfield, Herts, AL10 9AB. The 2<sup>nd</sup> study block and test are online.

**Cost:**

£1,730 per 30 credit module for Home students commencing in academic year 2024/25. Modular fees remain at a fixed price for the duration of your studies based on year of commencement.

**Module Leader:**

Jemma Coleman [j.coleman3@herts.ac.uk](mailto:j.coleman3@herts.ac.uk)

**Content:**

The emphasis is to develop and consolidate skills in dermoscopy leading to the appropriate and timely management of skin lesions. It will include the following:

- Correct use of dermoscopy equipment
- Evidence base for the use of dermoscopy
- Typical dermoscopic features of common benign and malignant skin lesions.
- Use of dermoscopy in the context of skin lesion care pathways and national guidance (NICE)
- Introduction to tele-dermoscopy, mole mapping and tele-dermatology.

**Study Route:** This module is compulsory for the MSc Skin Lesion Management and will be of interest to health care professionals involved in the regular diagnosis and management of skin lesions including dermatologists in training, dermatology/skin cancer specialist nurses and GPwSIs and GPs seeing a lot of skin lesions.

Participants will need previous and ongoing regular access to large numbers of patients with skin lesions and a suitable clinical supervisor who uses dermoscopy regularly in clinical practice. A log diary of a minimum of 50 patients during the study period will form an essential part of the assessment. These pre-requisites form part of the module entry criteria.

**Assessment:** Dermoscopy Clinical Portfolio – 100%.

Practical OSCE: interpretation of dermoscopic images - Pass/Fail.

**Further information:**

Kathy Radley (Admissions)  
[k.radley@herts.ac.uk](mailto:k.radley@herts.ac.uk)